



# SMK NEGERI 1 BATAM

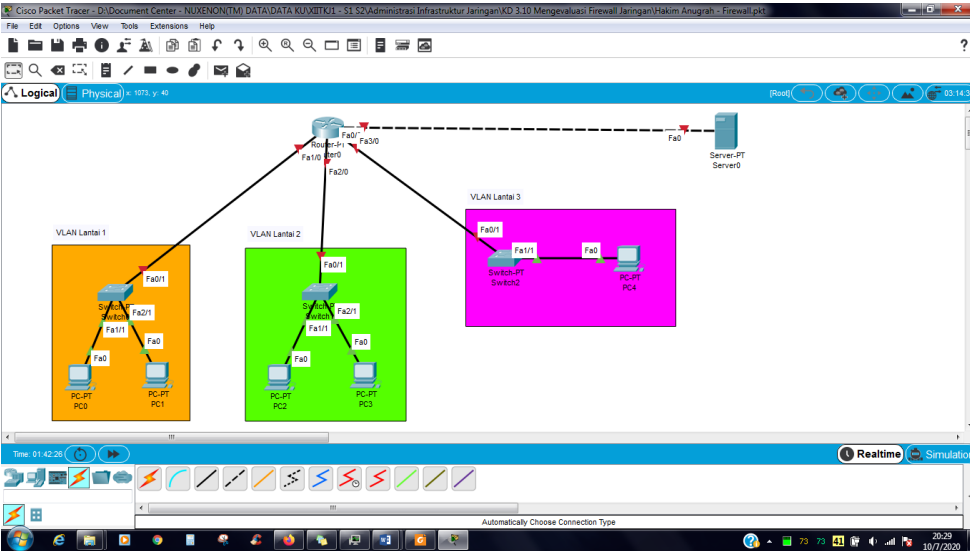
Jl. Prof. Dr. Hamka No. 1 Tembesi Kec. Batu Aji, Batam – 29422  
Telp. (0778) 365909, e-mail: mail@smkn1batam.sch.id,  
Website: www.smkn1batam.sch.id NPSN. 11000382, NSS. 321096102001.

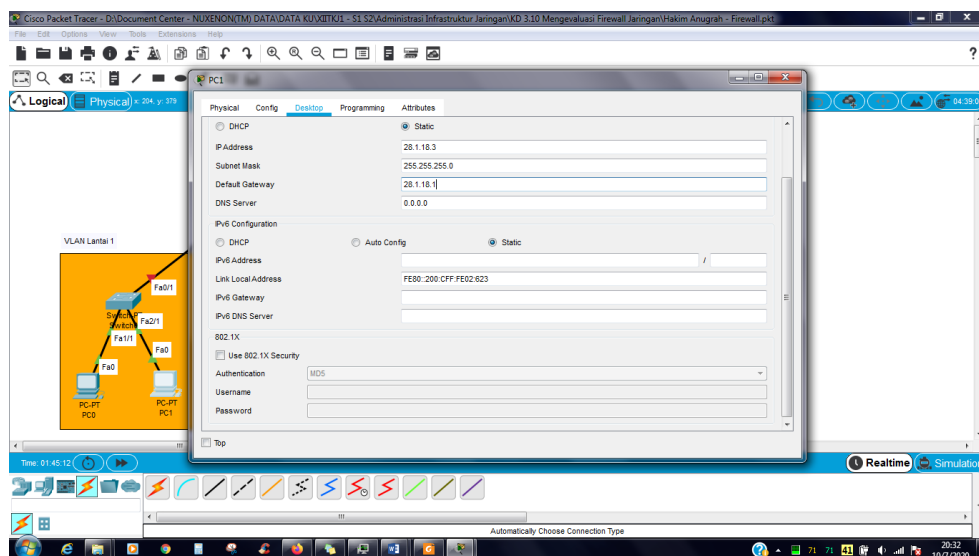
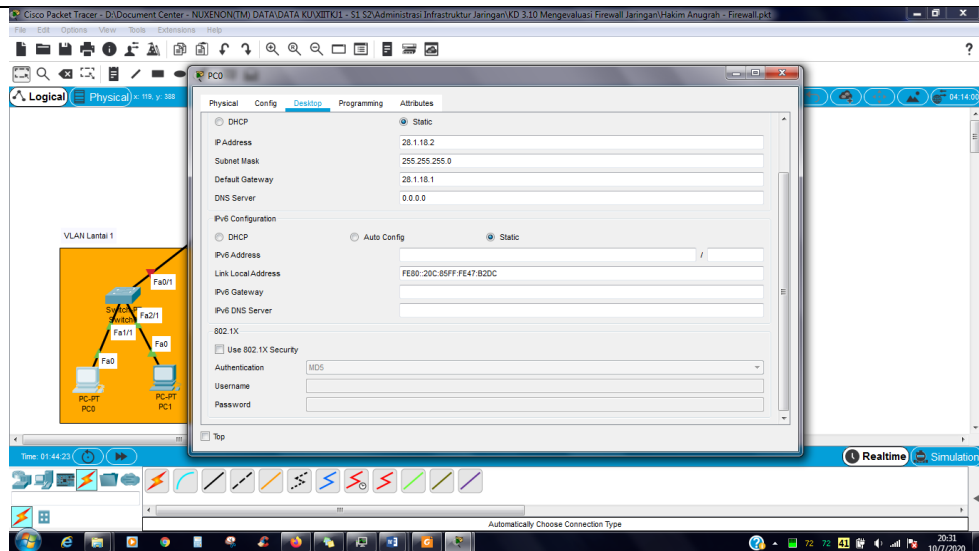
## LEMBAR KERJA SISWA / JOBSHEET

Nama Siswa : Hakim Anugrah

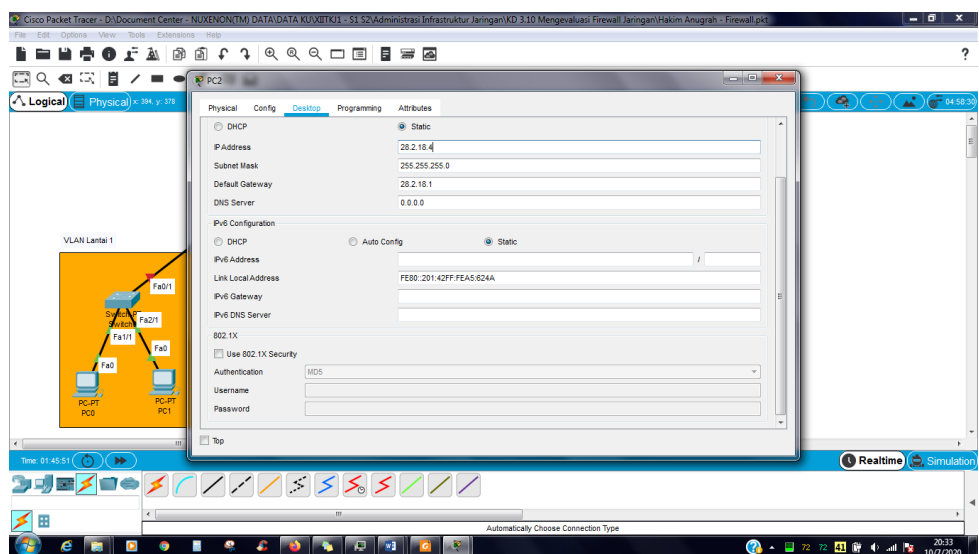
Kelas : XII TKJ 1

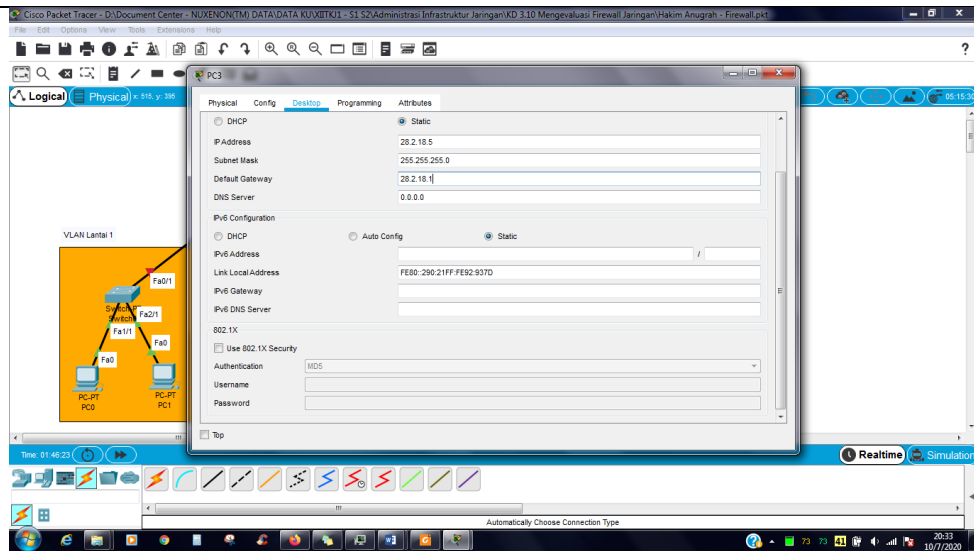
Tanggal : 07-10-2020

Kompetensi dasar / materi pokok	3.9 Evaluasi Firewall Jaringan 4.9 Konfigurasi Firewall Jaringan
Tujuan	1. Memahami firewall jaringan 2. Memahami konfigurasi firewall jaringan 3. Melakukan konfigurasi jaringan ...dst
Alat dan bahan	1. Laptop 2. Software Cisco Packet Tracer
Langkah kerja	<ol style="list-style-type: none"><li>1. Buka Aplikasi Cisco Packet Tracer di laptop/pc.</li><li>2. Buatlah topologi jaringan yang sesuai dengan tugas yang diberikan.</li></ol>  <p>The screenshot shows a Cisco Packet Tracer network simulation. A central router (R001) is connected to three VLANs: VLAN Lantai 1 (orange), VLAN Lantai 2 (green), and VLAN Lantai 3 (purple). Each VLAN contains a switch and two PCs. A server (Server-PT Server0) is connected to the router. The interface Fa0/30 of the router is connected to the server. The interface Fa0/20 of the router is connected to the switches of all three VLANs. The interface Fa0/10 of the router is connected to the switch of VLAN Lantai 1. The interface Fa0/11 of the router is connected to the switch of VLAN Lantai 2. The interface Fa0/12 of the router is connected to the switch of VLAN Lantai 3. The status bar at the bottom shows 'Time: 01:42:26', 'Realtime', and 'Simulation'.</p> <ol style="list-style-type: none"><li>3. Setting ip dari masing masing pc,yang pertama pada pc 0 dan pc 1 pada lantai 1.</li></ol>

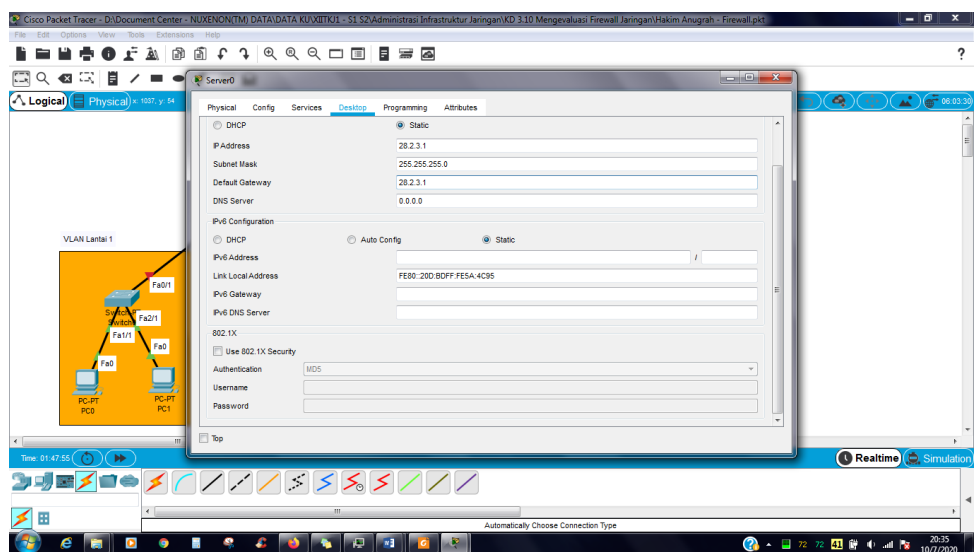
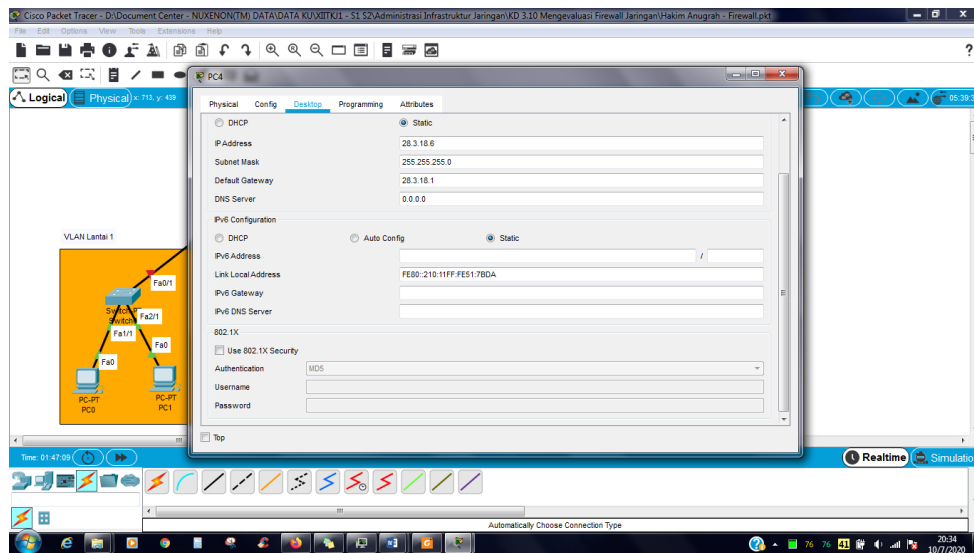


4. Selanjutnya setting ip dari pc 2 dan pc 3 pada lantai 2.

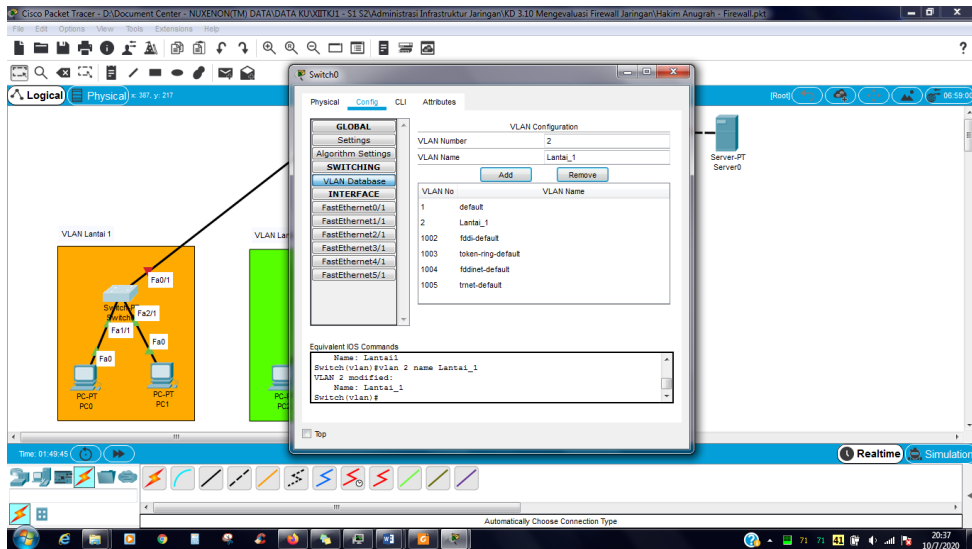




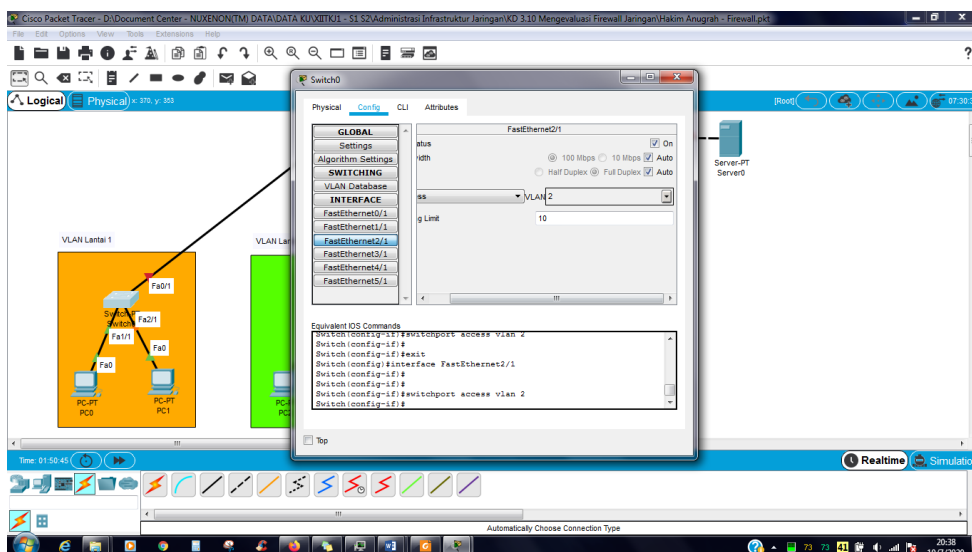
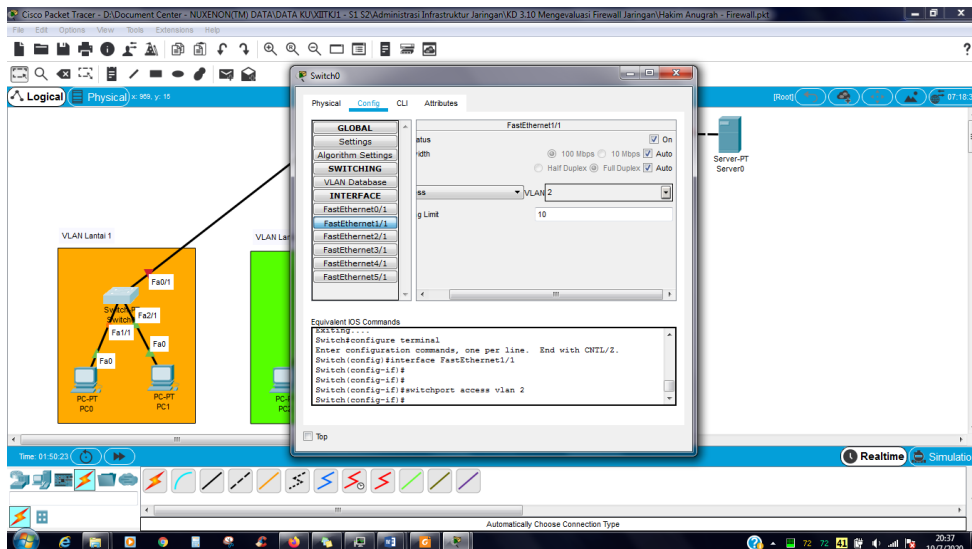
5. Selanjutnya konfigurasi ip pada pc 4 di lantai 3 dan pada server.



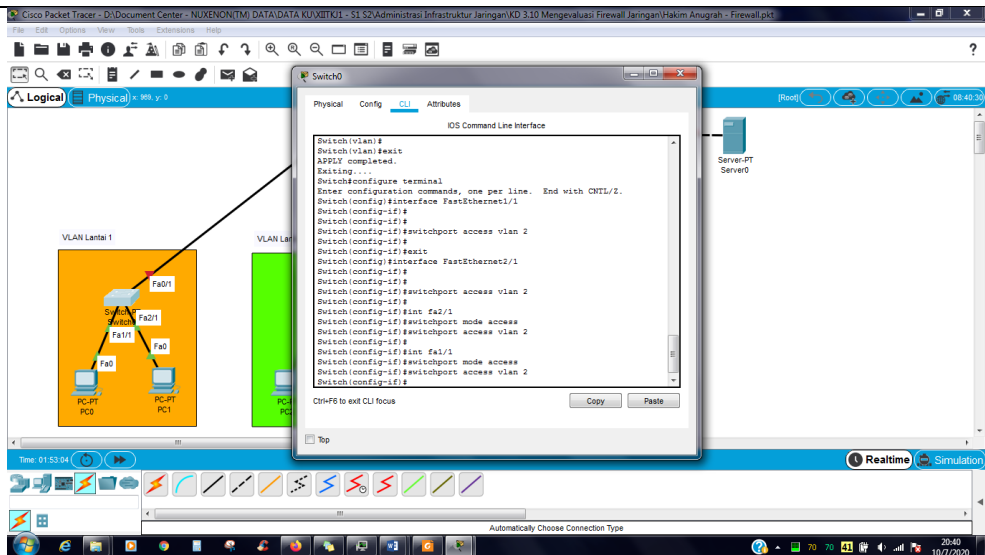
6. Masuk ke switch0 lalu setting id dan nama vlannya,vlan number diberi nomor 2 karena nomor 1 adalah vlan default ( buat id vlannya 2, nama vlannya Lantai\_1 ).



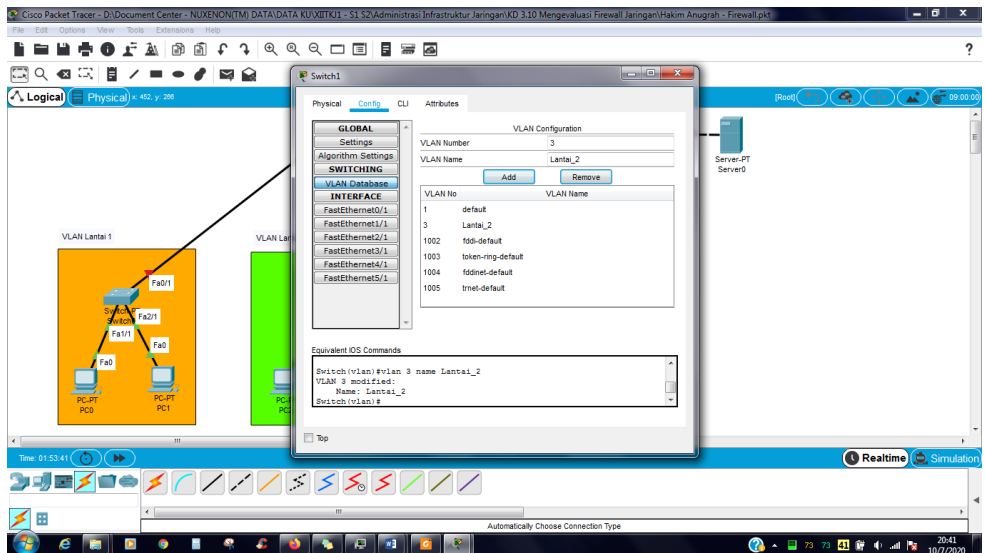
7. Masuklah ke FastEthernet 1/1 dan 2/1. Jadikanlah vlan 2.



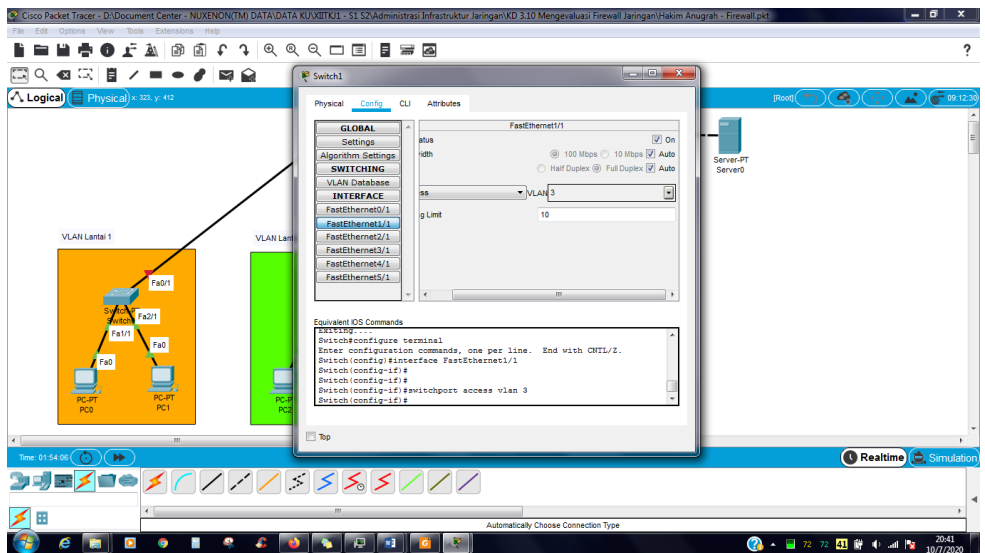
8. Kemudian masuk ke bagian CLI, ketikkan syntax seperti berikut.

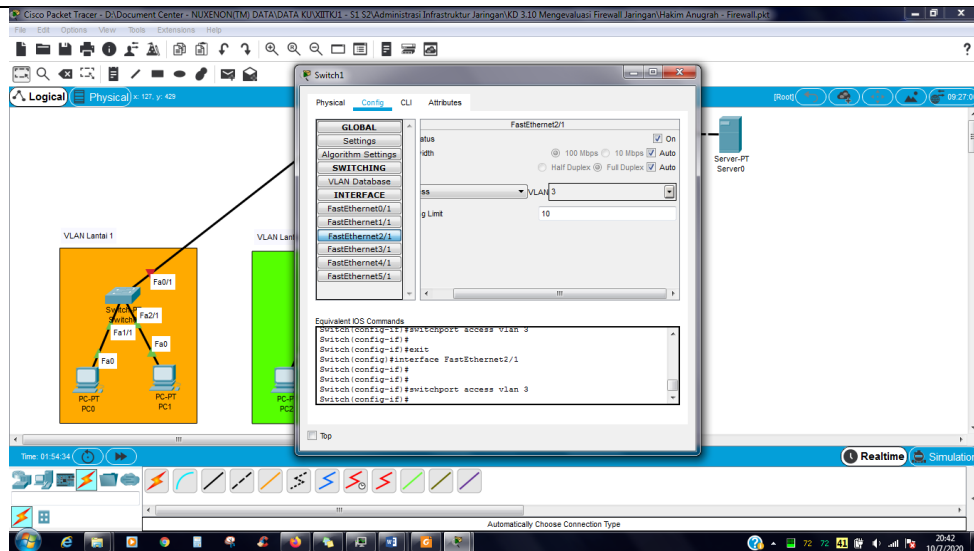


10. Masuk ke switch3 daftarkanlah nomor vlan menjadi vlan 3 dan nama vlannya Lantai\_2.

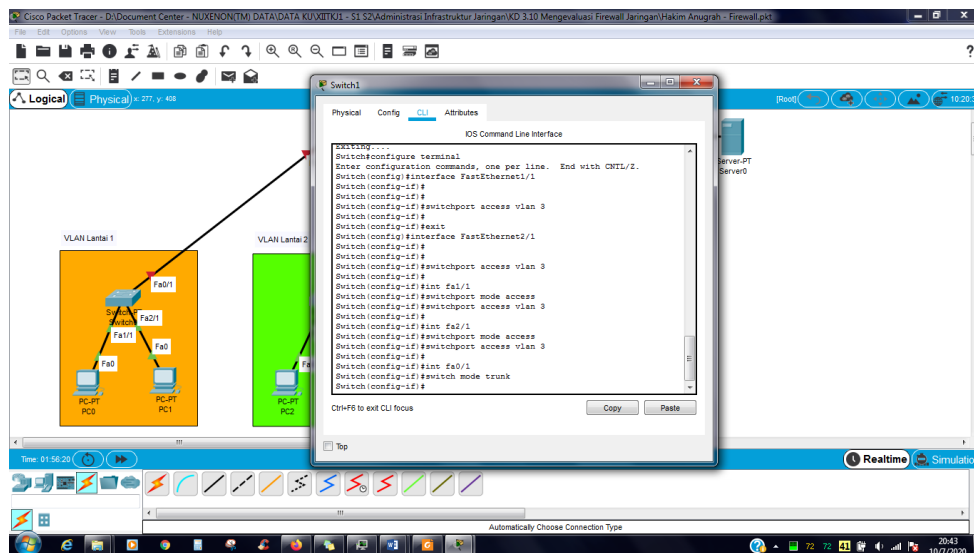


11. Masuklah ke FastEthernet1/1 dan 2/1 dan jadikan menjadi vlan 3.

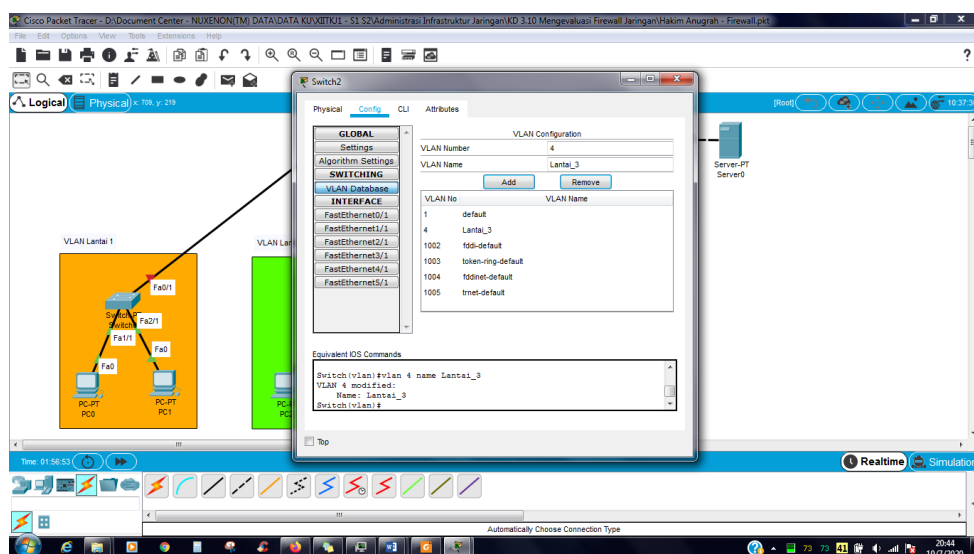




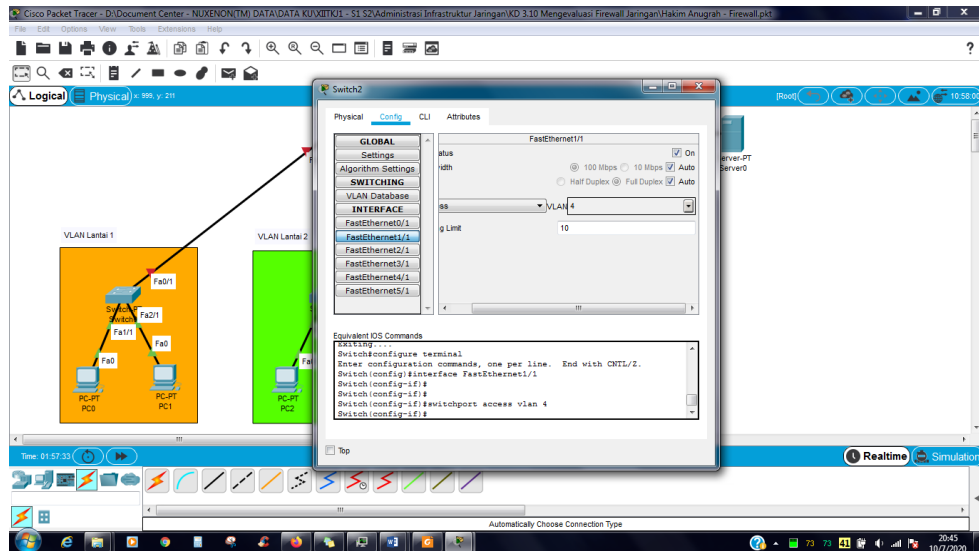
12. Kemudian masuk ke bagian CLI dan ketikkan syntax sebagai berikut.



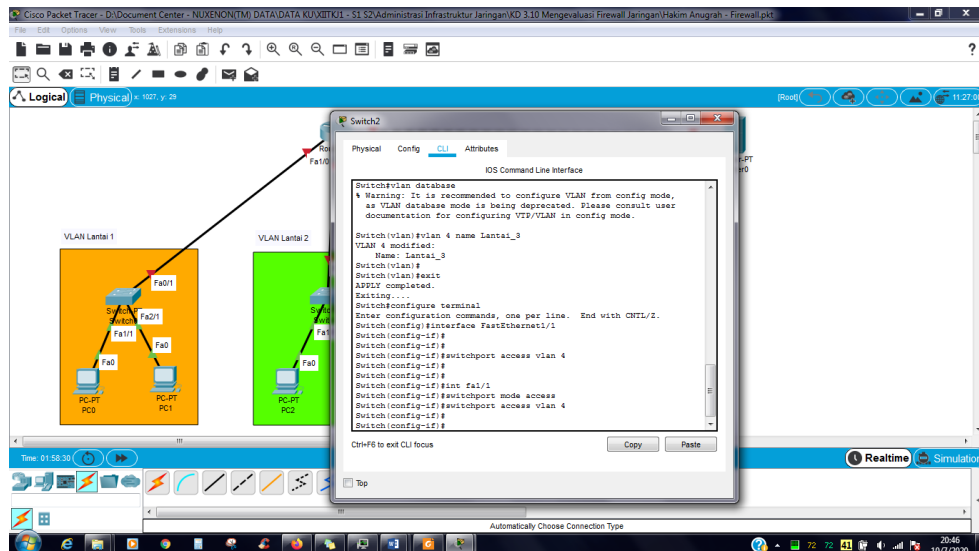
13. Masuk ke switch2 lalu setting id dan nama vlnnya.



14. Masuk ke FastEthernet1/1 lalu jadikanlah vlan 4



15. Kemudian masuk ke bagian CLI ketikkan syntax seperti gambar dibawah ini.



16. Lalu masuk ke CLI pada router dan ketikkan syntax seperti gambar dibawah ini.

```

Router0#
Router>conf t
Enter configuration commands, one per line. End with CNTL/Z.
Router(config)#int fa0/0.2
Router(config-subif)#encapsulation dot1Q 2
Router(config-subif)#ip address 28.1.18.1 255.255.255.0
Router(config-subif)#
Router(config-subif)#int fa2/0.3
Router(config-subif)#encapsulation dot1Q 3
Router(config-subif)#ip address 28.2.18.1 255.255.255.0
Router(config-subif)#
Router(config-subif)#int fa3/0
Router(config-subif)#int fa3/0.4
Router(config-subif)#encapsulation dot1Q 4
Router(config-subif)#ip address 28.3.18.1 255.255.255.0
Router(config-subif)#
Router(config-subif)#int fa0/0
Router(config-if)#ip address 28.2.3.1 255.255.255.0
Router(config-if)#
Router(config-if)#duplex auto
Router(config-if)#speed auto
Router(config-if)#
Router(config-if)#

```

```

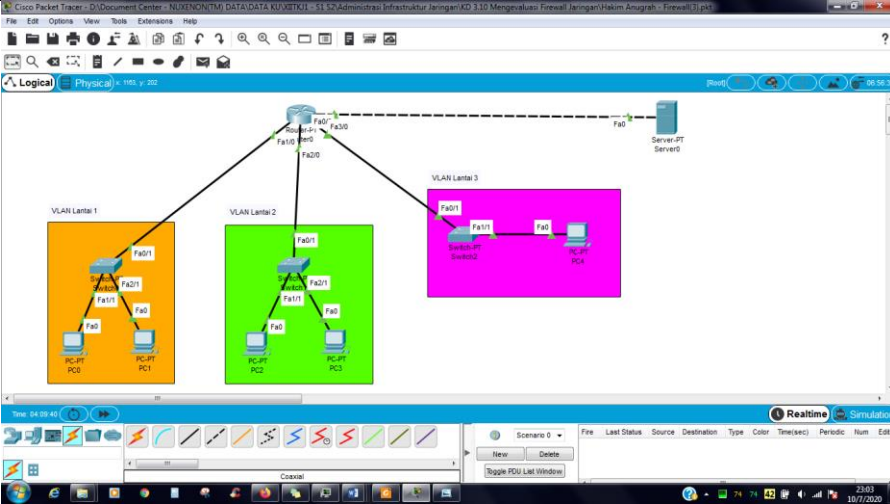
Router0#
Router>conf t
Enter configuration commands, one per line. End with CNTL/Z.
Router(config)#int fa0/0
Router(config-if)#duplex auto
Router(config-if)#speed auto
Router(config-if)#
Router(config-if)#ip access-group 110 in
Router(config-if)#access-list 110 deny icmp 28.2.18.0 0.0.0.0 255.28.3.18.0 0.0.0.0 255
Router(config-if)#
Router(config)#access-list 110 permit icmp 28.2.18.0 0.0.0.0 255 any
Router(config)#
Router(config)#int fa1/0
Router(config-if)#no sh
Router(config-if)#
Router(config-if)#
%LINK-5-CHANGED: Interface FastEthernet1/0, changed state to up
%LINEPROTO-5-UPDOWN: Line protocol on Interface FastEthernet1/0, changed state to up
%LINK-5-CHANGED: Interface FastEthernet1/0.2, changed state to up
%LINEPROTO-5-UPDOWN: Line protocol on Interface FastEthernet1/0.2, changed state to up
Router(config-if)#

```

```

Router0#
Router>conf t
Enter configuration commands, one per line. End with CNTL/Z.
Router(config)#int fa0/0
Router(config-if)#duplex auto
Router(config-if)#speed auto
Router(config-if)#
Router(config-if)#no sh
Router(config-if)#
%LINK-5-CHANGED: Interface FastEthernet0/0, changed state to up
%LINEPROTO-5-UPDOWN: Line protocol on Interface FastEthernet0/0, changed state to up
Router(config-if)#exit
Router(config)#exit
%SYS-5-CONFIG_I: Configured from console by console
Router#
Router>conf t
Enter configuration commands, one per line. End with CNTL/Z.
Router(config)#
Router(config)#int fa0/0
Router(config-if)#ip address 28.3.2.1 255.255.255.0
Router(config-if)#no sh
Router(config-if)#

```

<p>Hasil</p>	
<p>Evaluasi</p>	<p>Pada saat praktek untuk menyelesaikan jobsheet, diharapkan ketelitian dalam pembuatan jobsheet ini.</p> <ol style="list-style-type: none"> <li>1. Firewall adalah suatu system yang dirancang untuk mencegah akses yang tidak diinginkan dari atau ke dalam suatu jaringan internal.</li> <li>2. Manfaat Firewall diantara lain : Melindungi komputer dari akses jarak jauh tidak sah, memblokir pesan yang menaut ke konten yang tidak diinginkan, menjadikan gaming online lebih aman, dan lain sebagainya.</li> </ol>

Batam, 2020  
Guru,

\_\_\_\_\_  
NIP.